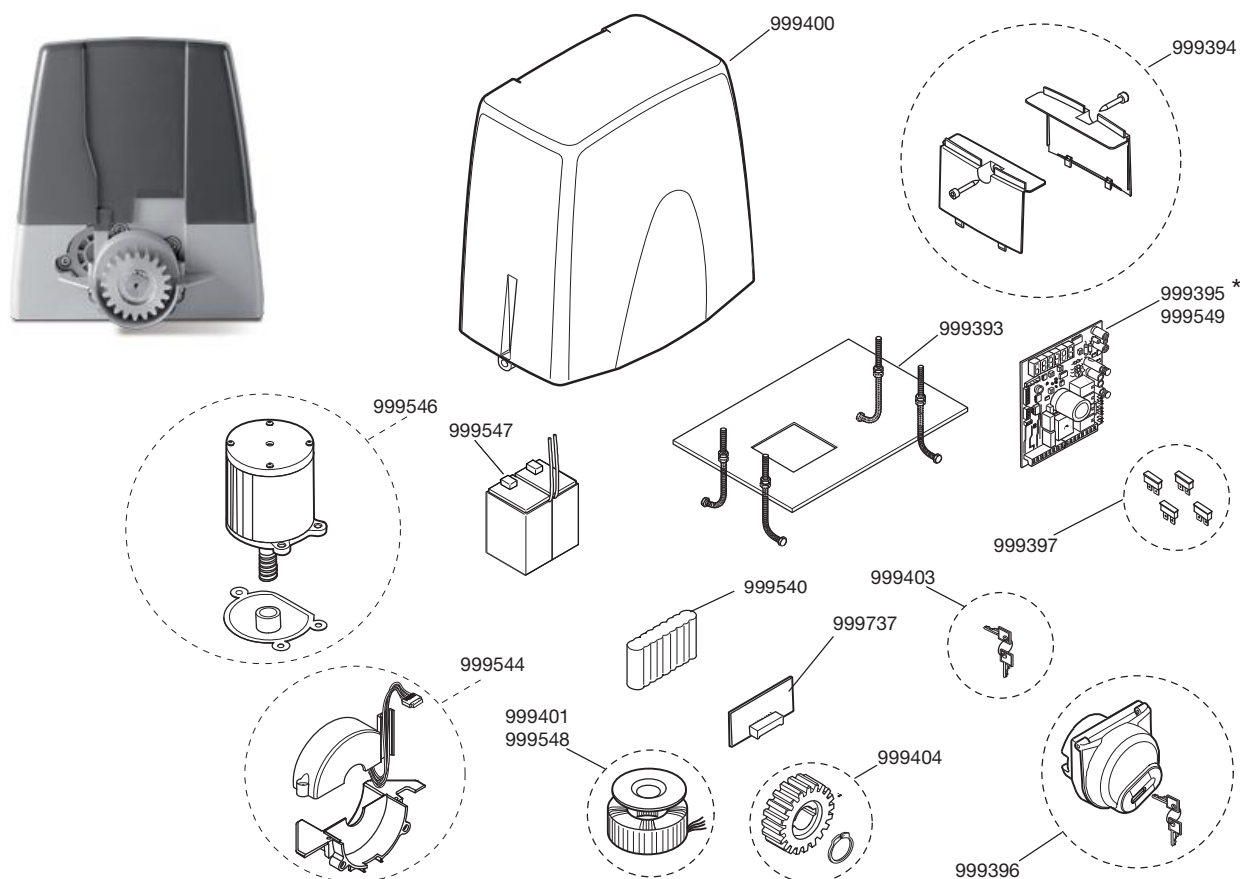


**CUSTOMER SERVICE**  
CARDIN ELETTRONICA

**SERIES SL - AUTOMATION FOR SLIDING GATES**  
100/SL324EBSB - 100/SLX324



\* To order the Electronic card you must indicate the circuit number printed on the back off the card, as well as the product code e.g.: **999395 / 0000A**

CODICE	PZ	DESCRIZIONE	product code	circuit code
999393	1	Motor base plate in metal		
999394	1	Spray painted side covers left/right		
999395	1	Electronic card YPR324B00 for SL324EBSB		
999396	1	Manual release mechanism + 999403		
999397	1	Set of 20 fuses 4A - 15A		
999400	1	Upper cover		
999401	1	Transformer ZUT260VA for SL324EBSB		
999403	1	Manual release mechanism key		
999404	1	Pinion for the m4 toothed rack		
999540	1	Battery NiMH 1300 mAh-24V for SLX324		
999544	1	Encoder (cover + electronic card)		
999546	1	Motor unit		
999547	1	Lead battery 12V x 2 = 24V 4 Ah for SL324EBSB		
999548	1	Transformer ZUT250VA		
999549	1	Electronic card with display LCD JPRSCP24DQ00		
999773	1	Battery charger		