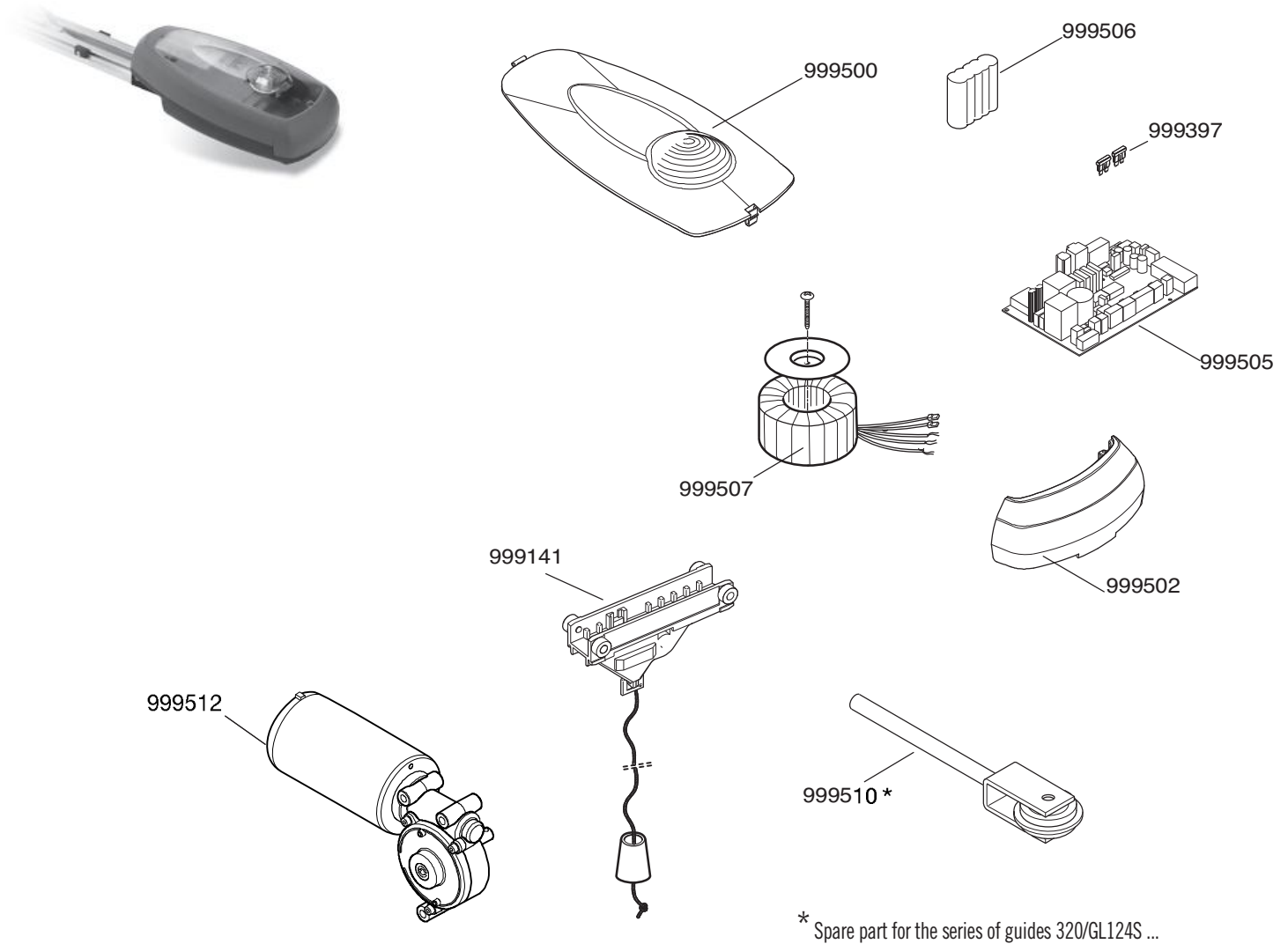


**SERIES GL - CHAIN-GUIDED AUTOMATION FOR SECTIONAL GARAGE DOORS**  
311/GL124EBSS



\* Spare part for the series of guides 320/GL124S ...

PART NR.	PCS	DESCRIPTION
999141	1	Carriage with rollers
999397	1	Set of 20 fuses 4A - 15A
999500	1	Transparent cover
999502	1	Wiring cover
999505	1	Electronic card YPR124B01
999506	1	Battery NiMH 1300 mAh-24V
999507	1	Transformer ZUT230VA
999510	1	Chain tightener
999512	1	Motor unit