



*Chain-guided automation for
sectional doors*


cardin[®]
RIELLO ELETTRONICA GROUP

GLZACK

24V



PRG



(optional)



(optional)

Chain guided automation for residential sectional and counterbalanced doors. An efficient and robust 24V propulsion unit with an in-built programmer fitted with all the elements for operation under all working conditions, it slots together with a steel chain driven transmission guide available in two different lengths:

- 3000mm (for doors up to 2,4m)

- 4000mm (for doors up to 3,4m)

The propulsion unit is commanded by state of the art logic based on encoder control, with deceleration in the opening and closing directions, which tracks the movement of the door. The system is based on a self-learning programming procedure with function setting using an LED display and external buttons.

The automation is fitted with a 433MHz radio receiver (optional 868MHz version to be ordered separately), courtesy lights and a power supply cable.

The product range is factory set for the insertion of (Li-Ion) buffer batteries that guarantee emergency operation during blackouts.

The manual release mechanism used to detach the carriage from the chain guide is carried out using a release cord that separates the door from the automation. Repositioning takes place automatically whenever foreign objects get in the way of the door as it is moving.

The complete range of products have been designed and constructed in accordance with the safety standards in force and feature automatic, semi-automatic, manual and remote control functions.



Multi-decoding:

The product range is factory fitted with a multi-decoding remote control module (system S449 - S486 - S504 - S508).

KIT - product code and contents

KT-GLZACK600: - GLZACK600 x1
- ZACKGB3 x1
- TXQ504C4 x1

KT-GLZACK1000: - GLZACK1000 x1
- ZACKGB3 x1
- TXQ504C4 x1



SELF-PROGRAMMING ELECTROMECHANICAL UNIT WITH A 24V MOTOR **GLZACK600**

for residential use, with an encoder controlled 24V motor and in-built electronic programmer with LED courtesy lights.
Maximum drag force 600N.



SELF-PROGRAMMING ELECTROMECHANICAL UNIT WITH A 24V MOTOR **GLZACK1000**

for residential use, with an encoder controlled 24V motor and in-built electronic programmer with LED courtesy lights.
Maximum drag force 1000N.

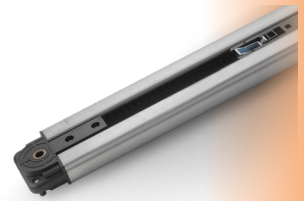
GUIDE

3 piece belt guide.
(length 3000mm)

ZACKGB3

3 piece belt guide.
(length 4000mm)

ZACKGB4



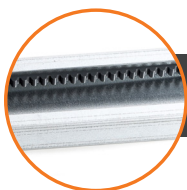
LIST OF AVAILABLE ACCESSORIES:

KBLION - LITHIUM BATTERY KIT

ZACKBTKEY - BLUETOOTH USB STICK

ZACKCABLELOCK - MANUAL RELEASE CORD

GLBO - COUNTERBALANCED GARAGE DOOR ADAPTER



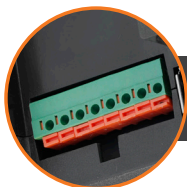
BELT GUIDE



LED LIGHTING



EXTERNAL PROGRAMMING BUTTONS



TERMINAL CONNECTION BLOCKS

DATA:

MOTOR SPECIFICATIONS

		GLZACK600	GLZACK1000
Motor power supply	Vdc	24	24
Nominal electrical input	A	2,5	3,3
Power input	W	120	160
Duty cycle	%	35	35
Drag speed	m/min	9,6	9,6
Maximum thrust	N	600	1000
Max. travel distance (ZACKGB3/ZACKGB4)	mm	2500/3500	2500/3500
Operating temperature range	°C	-20°...+55°	-20°...+55°
Protection grade	IP	40	40

PROGRAMMER SPECIFICATIONS

Power supply	Vac	230	230
Nominal electrical input	A	1	1,5
Maximum power yield	W	210	310



CONCEIVED IN CARDIN



www.cardin.it