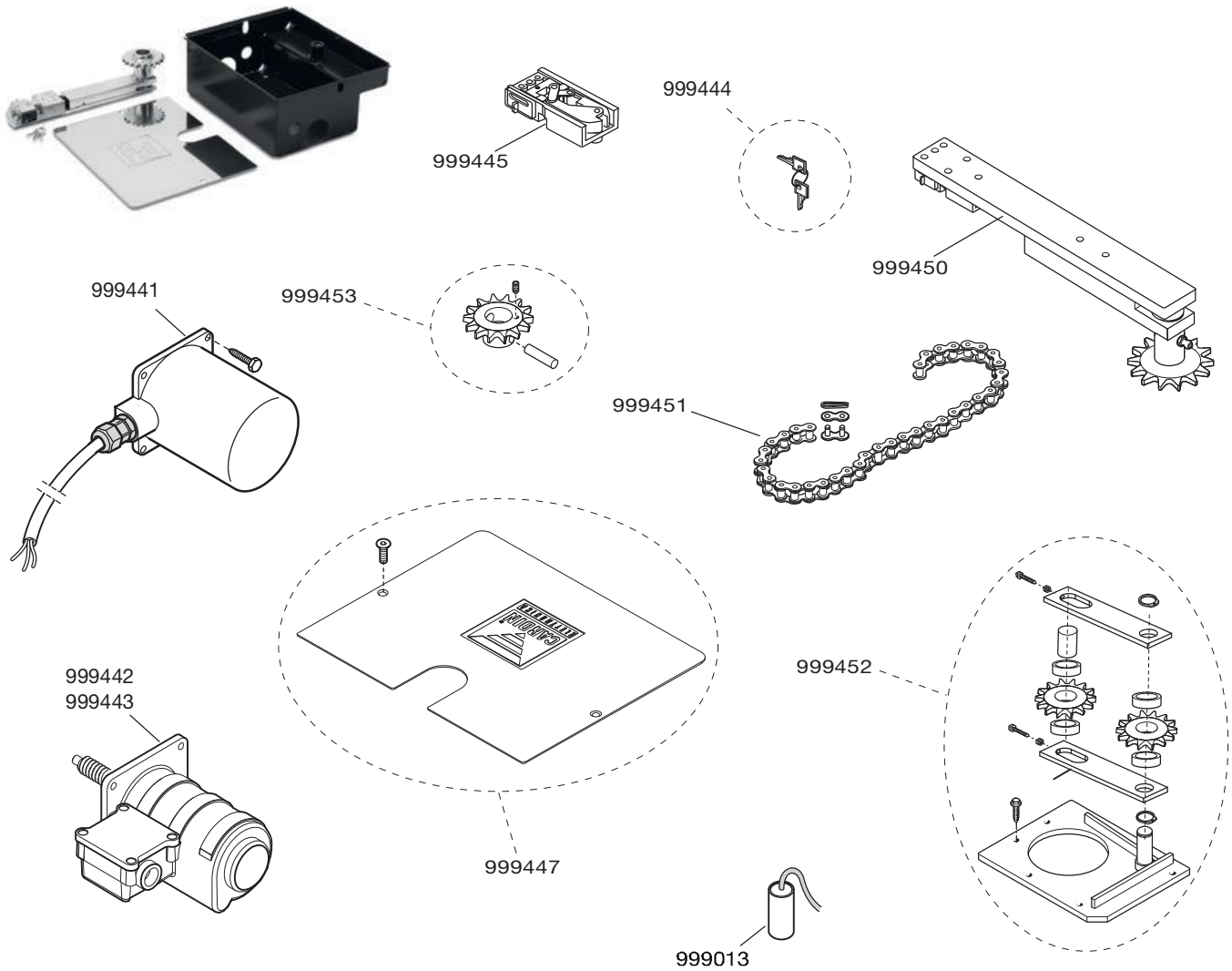


**CUSTOMER SERVICE**  
**CARDIN ELETTRONICA**

**SERIES HL - UNDERGROUND AUTOMATION FOR HINGED GATES**

806/HLCF18 - 800/HL2518CL

800/HL1824SB - 800/HL1824ESB



PART NR.	PCS	DESCRIPTION
999013	1	Capacitor 10µF-450V
999441	1	Motor unit 230 Vac (HL2518CL)
999442	1	Motor unit 24 Vac (HL1824SB)
999443	1	Motor unit 24 Vdc (HL1824ESB)
999444	1	Manual release mechanism key
999445	1	Manual release mechanism
999447	1	Stainless steel cover
999450	1	Transmission lever
999451	1	Chain
999452	1	Chain tightener kit *
999453	1	Pinion